

Side-Aware Boundary Localization for More Precise Object Detection Supplementary Materials

Jiaqi Wang¹, Wenwei Zhang², Yuhang Cao¹, Kai Chen³, Jiangmiao Pang⁴,
Tao Gong⁵, Jianping Shi³, Chen Change Loy², and Dahua Lin¹

¹ The Chinese University of Hong Kong

² Nanyang Technological University ³ SenseTime Research

⁴ Zhejiang University ⁵ University of Science and Technology of China
{wj017,dhlin}@ie.cuhk.edu.hk

{yhcao6,chenkaidev,pangjiangmiao,gongtao950513}@gmail.com

{wenwei001,ccloy}@ntu.edu.sg shijianping@sensetime.com

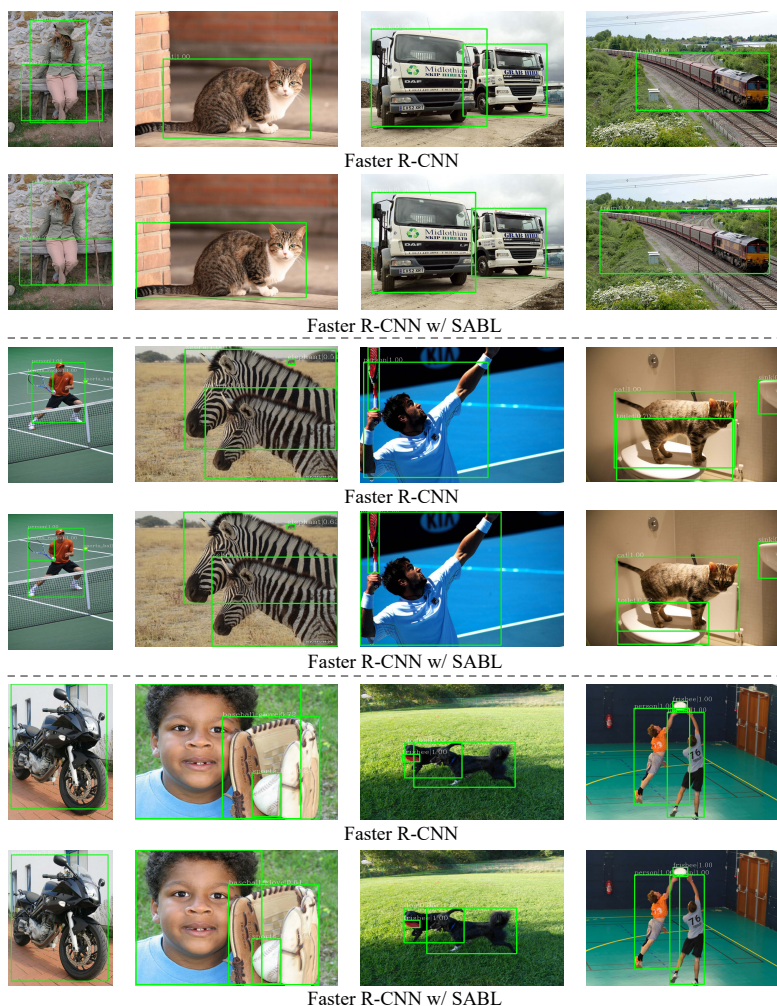


Fig. 1: Comparison of object detection results between Faster R-CNN baseline and Faster R-CNN w/ SABL on COCO 2017 val. ResNet-101 w/ FPN backbone and 1x training schedule are adopted in both methods. Faster R-CNN w/ SABL shows more precise localization results than the baseline.